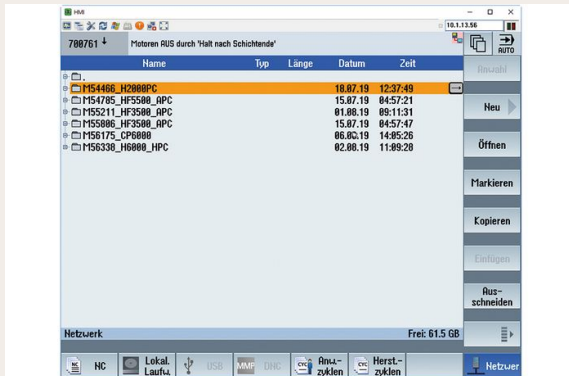


## Processing from an external memory (EES)

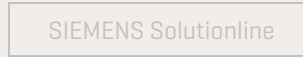
Productivity | Performance Increase



Series



Control



The EES function allows you to process part programs from all connected data memories directly via the NC (e.g. local drive, USB stick, network drive, etc.). This behaviour corresponds to processing from the NC part program memory, without the limitations that apply to "Processing externally". With this function, the part program size is practically unlimited. This size depends only on the capacity of the external data memory.

## Characteristics

- \_ The size of the part programs is limited by the capacity of the external data memory
- \_ An external memory is located outside of the NCU (external)
- \_ No limitations concerning the language constructs used

## Benefits

- \_ Uniform program handling
- \_ Limitations, such as those that apply to programs for "Processing externally" and "Processing of external sub-routines [EXTCALL]", no longer apply (backward skips, long skips, long program loops [GOTOF/GOTOB] possible)
- \_ Uniform syntax for the sub-routine call, irrespective of the sub-routine storage location (no EXTCALL required)
- \_ Program correction with NC stop possible

## Requirements

- \_ SIEMENS SolutionlineAttention: Package fits only to machines where no master computer is serving NC programs.